

# Sinfonie „Aus der Neuen Welt“

I

Antonín Dvořák / Thomas Stapf (Bearb.)

Adagio  $\text{♩} = 126$

9 G.P. 11 8 19 a2

23 29 37 4 8 f

39 3

47 Allegro molto  $\text{♩} = 136$  62 a2 mf ff

67 76 6 ff

83 1. 2.

93 100 114 14 8 mf

122 148 160 168 172 180 22 a2 f

194 1. 2. ff

205 206 214 ff

Blech IV

217

222



229

230



238



247

3

3



II

Largo ♩ = 52

9



10

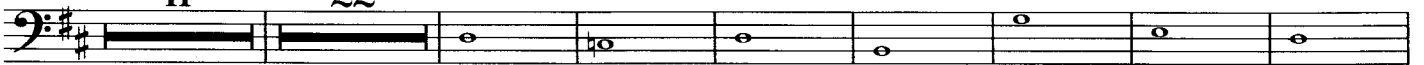
11

21

22

43

ad lib.



50

53

17

70

12

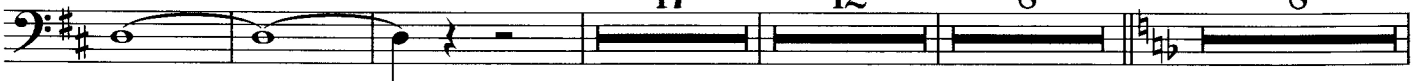
82

8

90

8

Un poco piu mosso



98

20

118

Meno mosso

136

8

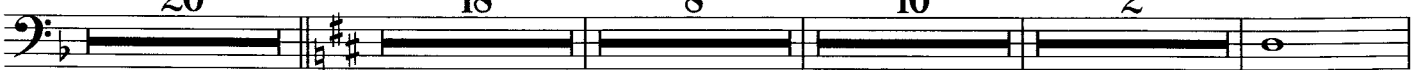
144

10

ritard.

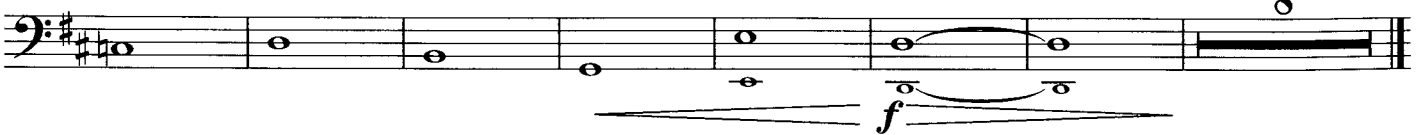
156

in tempo



157

8



III

Molto Vivace ♩ = 240

5

8

13

8

21

8

29

12



Blech IV

41 49

8

*ff*

56 60 68 *poco sostenuto* 76

8 8 8

84 92 *in tempo*

8

*p*

98 99 36

*ff*

140 146

4

150 154 158

*f* *f* *f*

162 166

4 2

*f*

174 178

*ff* *fff*

182 184

*mf* *p* *ff*

10

IV

Allegro con fuoco ♩ = 152

10

7

*ff*

13

Blech IV

26

20

8

First staff of music, bass clef, key signature of one sharp (F#), starting with a rest and followed by eighth notes.

34

Second staff of music, bass clef, key signature of one sharp (F#), starting with a rest and followed by eighth notes.

41

44

Third staff of music, bass clef, key signature of one sharp (F#), starting with a rest and followed by eighth notes.

47

50

54

4

Fourth staff of music, bass clef, key signature of one sharp (F#), starting with a rest and followed by eighth notes.

56

60

4

Fifth staff of music, bass clef, key signature of one sharp (F#), starting with a rest and followed by eighth notes.

66

84

92

18

8

Sixth staff of music, bass clef, key signature of one sharp (F#), starting with a rest and followed by eighth notes. Includes dynamic marking *ff*.

97

102

Seventh staff of music, bass clef, key signature of one sharp (F#), starting with a rest and followed by eighth notes. Includes dynamic marking *fff*.

104

108

116

8

2

Eighth staff of music, bass clef, key signature of one sharp (F#), starting with a rest and followed by eighth notes. Includes dynamic marking *fff*.

118

122

1.

2

a2

*pp*

*ff*

*fff*

Ninth staff of music, bass clef, key signature of one sharp (F#), starting with a rest and followed by eighth notes. Includes dynamic markings *pp*, *ff*, and *fff*.

128

132

Tenth staff of music, bass clef, key signature of one sharp (F#), starting with a rest and followed by eighth notes.

137

Pos.

*lunga*

Tuba

*ppp*

Eleventh staff of music, bass clef, key signature of one sharp (F#), starting with a rest and followed by eighth notes. Includes dynamic marking *ppp*.