

Sinfonie „Aus der Neuen Welt“

I

Antonín Dvořák / Thomas Stapf (Bearb.)

Adagio $\text{♩} = 126$

5 1. a2 G.P. 11 8

19 *pp* *fp*

25 4 29 2 1. 2 2.

36 37 a2 *f*

42 47 Allegro molto $\text{♩} = 136$ 3 1. 11 *mf*

62 a2 76 6 *ff* *ff*

77 1.

87 2.

97 100 114 14 1. 2. *mf* *p*

120 122 148 160 22 12 8 *f*

Blech III, Horn in F

168 4 172 8 180 14 194 1. *ff*

200 2 206 *ff*

211 214

220 222 230

231

241

250

II

Largo $\text{♩} = 52$ 9

pp *f*

10 11 21 22 43 ad lib. *ff*

50 53 70 82 1. con sord. *p*

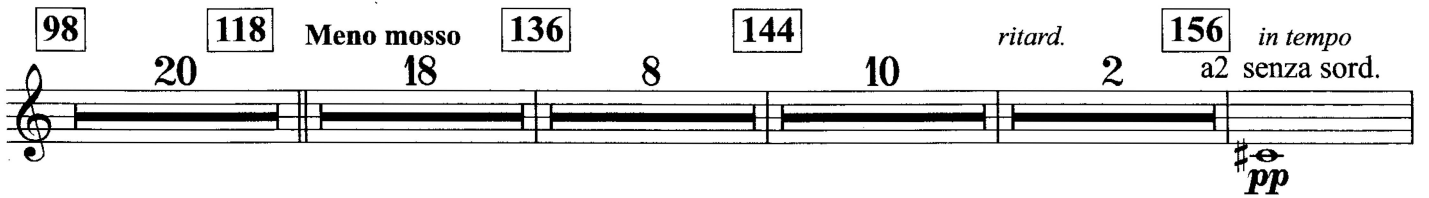
Blech III, Horn in F

90 Un poco piu mosso

85



98 20 118 18 *Meno mosso* 136 8 144 10 *ritard.* 2 156 *in tempo* a2 *senza sord.*



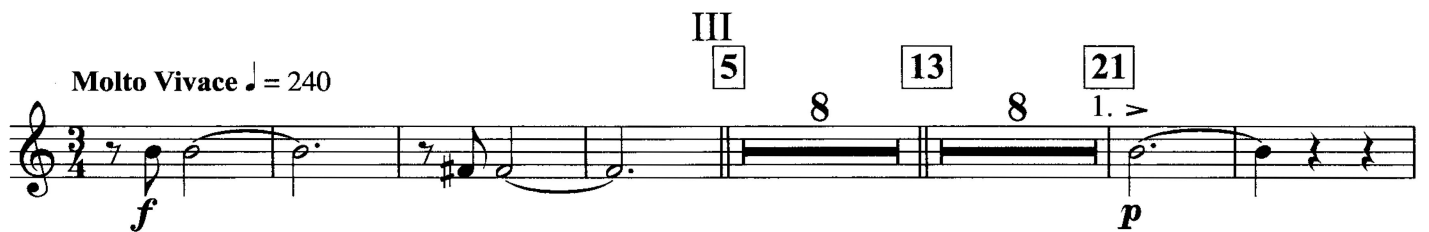
157



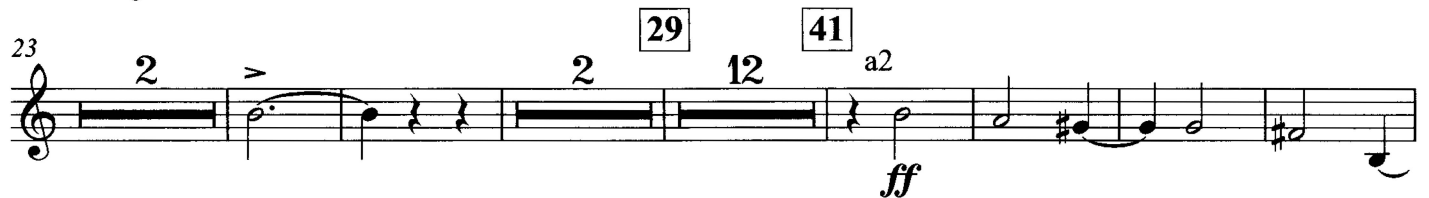
Molto Vivace ♩ = 240

III

5 8 13 8 21 1. >



23 2 > 29 12 41 a2



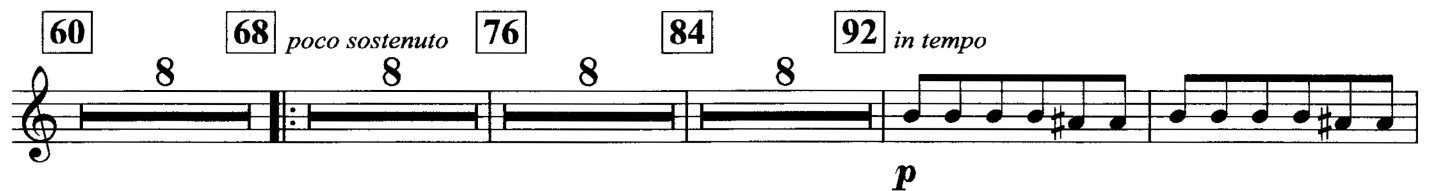
45 49



53



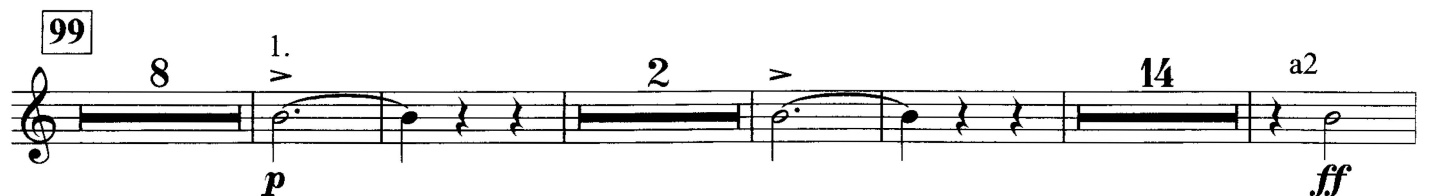
60 8 68 poco sostenuto 8 76 8 84 8 92 in tempo



94



99 8 1. > 2 > 14 a2



Blech III, Horn in F

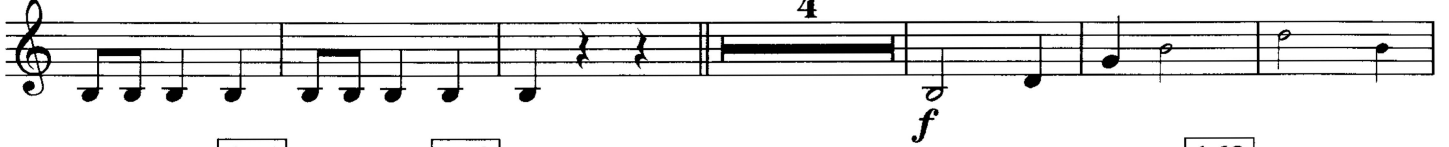
128



136



143



153



166



174



181



IV

Allegro con fuoco ♩ = 152

10



14



20



Blech III, Horn in F

34

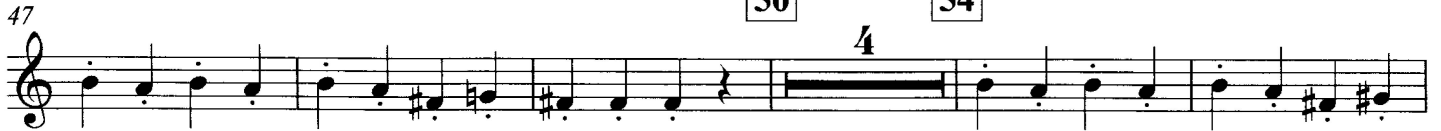


44



50

54



60



66

84



92

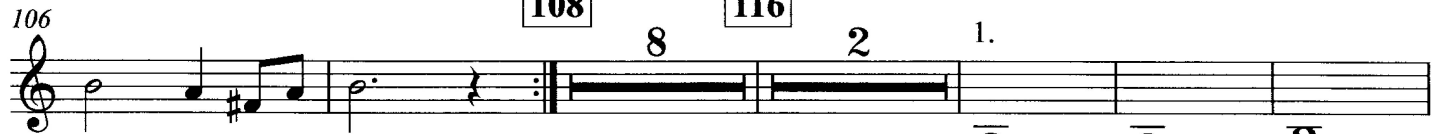


102



108

116



122



132



137

