

# Quadro

GEORG PHILIPP TELEMANN

Spiritoso

1

5

9

12

15

20

25

28

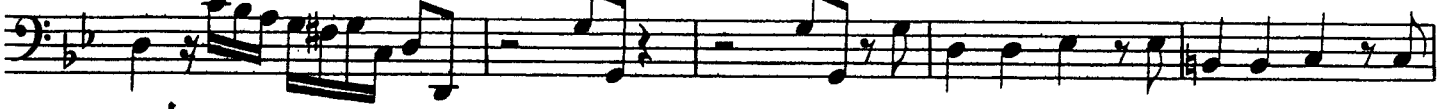
33

38

1

Basso

42



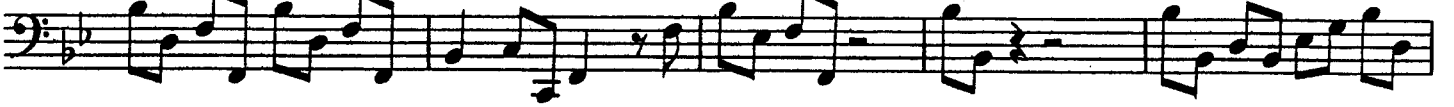
47



51



55



60



63



Grave



9



17



25



33



Basso

Allegro

First musical staff, starting with a bass clef, a key signature of two flats (B-flat and E-flat), and a common time signature. The melody consists of eighth and quarter notes.

3

Second musical staff, starting with a measure rest for 3 measures. The melody continues with eighth and quarter notes.

6

Third musical staff, starting with a measure rest for 6 measures. The melody continues with eighth and quarter notes, ending with a double bar line and repeat dots.

9

Fourth musical staff, starting with a double bar line and repeat dots. The melody continues with eighth and quarter notes.

11

Fifth musical staff, starting with a measure rest for 11 measures. The melody continues with eighth and quarter notes.

14

Sixth musical staff, starting with a measure rest for 14 measures. The melody continues with eighth and quarter notes, including some chromatic movement.

18

Seventh musical staff, starting with a measure rest for 18 measures. The melody continues with eighth and quarter notes, including a sharp sign in the key signature.

21

Eighth musical staff, starting with a measure rest for 21 measures. The melody continues with eighth and quarter notes.

24

Ninth musical staff, starting with a measure rest for 24 measures. The melody continues with eighth and quarter notes, ending with a double bar line and repeat dots.